



AT MILESTONE, WE HELP PATIENTS

Preanalytics Product Portfolio



MILESTONE
H E L P I N G
P A T I E N T S

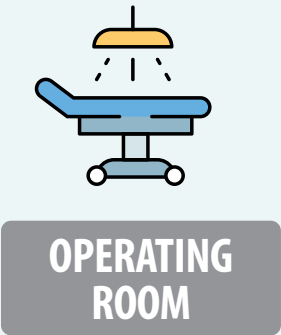




THE MILESTONE WAY

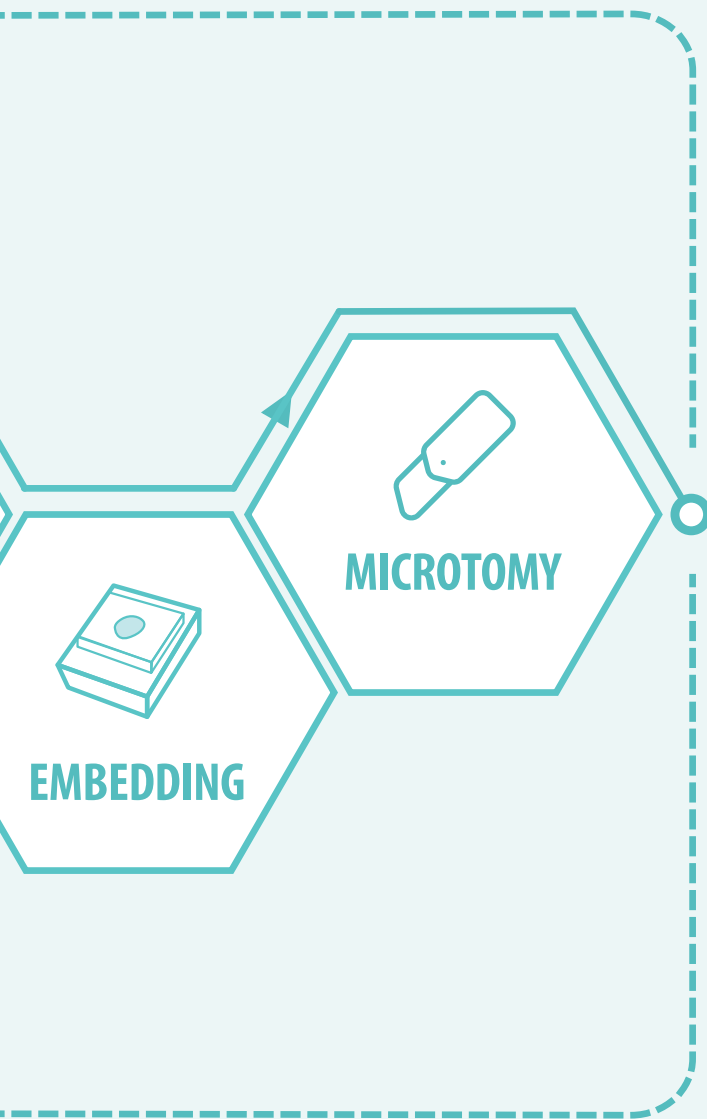
*Our team shares a true passion for what we do.
We are a team of professionals who values
long-term partnerships and believes
wholeheartedly that the patient comes first.
Our success is built on innovation and
a dedicated focus on helping patients.*

THE MILESTONE COMPREHENSIVE WORKFLOW



TRACKING
PREANALYTICS CHAIN OF CUSTODY

FROM OR TO AP..



**ADVANCED
STAINING**

... AND MUCH MORE

FIXATION AND DECALCIFICATION

FNA PROCEDURES

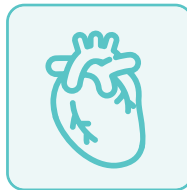
REAGENTS

CONSUMABLES

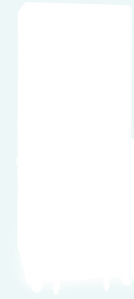
STANDARDIZED SPECIMEN COLLECTION WITH ZERO FORMALIN EXPOSURE



Milestone's innovative formalin handling solutions eliminate operator exposure, control critical parameters, and ensure precise management of temperature, transfer time, and fixative duration, improving the accuracy of the final diagnosis.



- **ENHANCED SAFETY**
- **STANDARDIZED PROTOCOLS**
- **EFFICIENCY AND TIME SAVINGS**
- **TRACEABILITY FROM OR**



UltraSAFE

Automated Formalin
Dispensing System



SealSAFE

Fixative Filling
and Vacuum Sealing System



TissueSAFE Plus

Vacuum Sealing System

FAST, RELIABLE, AND HIGH-QUALITY FROZEN SECTIONS



Milestone's tools offer fast, high-quality results, preventing ice crystal formation and ensuring reliability for surgeons and pathologists. Our solutions enable rapid freezing, standardized fixation, and staining, transforming the frozen sections procedure into a reliable method.



- **SUPERIOR QUALITY**
- **FAST & AUTOMATED**
- **STANDARDIZATION**
- **HIGH SAFETY**



PrestoCHILL

Flash Chiller for
High Quality Frozen Sections



PRESTO PRO

Processor/Stainer for
High Quality Frozen Sections



FlashFREEZE

Flash Freezer for
Biobanking



FineFIX Module

Enhanced Manual Staining
for Frozen Sections

DISCOVER NEXT GENERATION GROSSING



Milestone's grossing stations revolutionize biospecimen grossing in pathology labs. Designed for optimal efficiency, safety, and documentation, these stations provide operators with all the necessary tools at their fingertips.



- **OPTIMAL ERGONOMICS**
- **HIGH SAFETY AND EFFICIENT WORKFLOW**
- **ENHANCED PRODUCTIVITY**
- **HIGH FLEXIBILITY**



UltraGROSS

Modular
Grossing Station



eGROSS

Ergonomic Mobile
Grossing Station



WorkSTATION

Workcenter for
Small Biopsies

FAST AND EASY **DIGITAL DOCUMENTATION** OF THE GROSSING STEP



Milestone's specialized digital imaging systems, MacroPATH and MacroVIEW, are designed to align with the era of Digital Pathology and Image Enhanced Reports (IER). They streamline and document the grossing procedure, improving lab efficiency and standardizing descriptions.



- **DIGITALIZED DOCUMENTATION**
- **ENHANCED TRACEABILITY**
- **STREAMLINED WORKFLOW**
- **FLEXIBLE SETUP**



MacroPATH

Macro Digital Imaging System



MacroVIEW

Mobile Macro Digital Imaging System for Autopsy Procedures

HIGHEST UPTIME, LOWEST OPERATIONAL COST IN TISSUE PROCESSING



Milestone's tissue processing solutions enable same-day diagnosis through fast, automated, and continuous loading processes for urgent biopsies. Paraffin pumping and cleaning cycles are eliminated, saving time, reducing blockages, and offering a cost-effective approach.



- **HIGHER PRODUCTIVITY**
- **ENHANCED WORKFLOW**
- **CONTINUOUS LOADING AND DUAL RUN**
- **SPECIMENS AND OPERATOR SAFETY**



MAGNUS

High Throughput
Tissue Processor



LOGOS EVO

Advanced
Tissue Processor



LOGOS One EVO

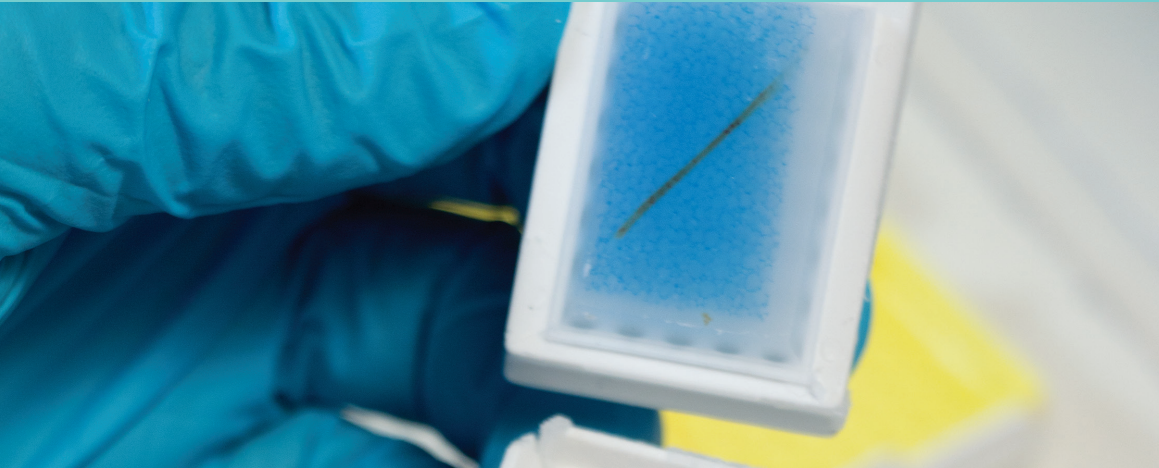
Smart
Tissue Processor



KOS

Multifunctional
Tissue Processor

SKIP THE MANUAL EMBEDDING STEP



Synergy technology automates tissue embedding, eliminating manual embedding steps and reorientation of tissues. It works seamlessly with Milestone tissue processors, accommodating various tissue types and sizes.



- **WORKFLOW OPTIMIZATION**
- **AUTOMATED PROCESSING AND EMBEDDING**
- **REDUCED TURNAROUND TIME**
- **OPTIMAL SPECIMEN POSITIONING**



Synergy Autoembedding

Processing + embedding
all-in-one

FLEXIBLE AND TRACEABLE EMBEDDING



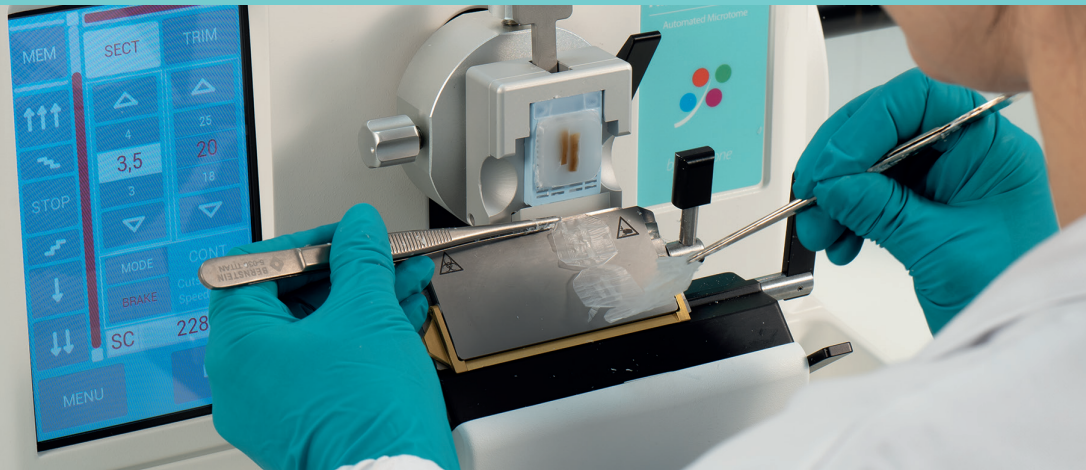
HistoDream EW Embedding Workstation

The HistoDream EW is a flexible and ergonomic embedding workstation that enables customization of the embedding workflow based on daily requirements. It features an innovative Tracking System (optional) for specimen traceability and visual matching of grossed and processed specimens.



- **FLEXIBLE**
- **ERGONOMIC**
- **TRACKING SYSTEM**

EFFICIENT AND HIGH-QUALITY CUTTING



The HistoDream M, a semi-automated microtome, and the HistoDream AM, a fully automated microtome, offer robust and reliable solutions for precise sectioning. Milestone's microtome line is specifically designed to intercept the needs of H&E, IHC, and molecular techniques, providing high-quality sections, safe operations, and ergonomic functionality.



- **SUPERIOR SAFETY**
- **IMPROVED EFFICIENCY**
- **EXCELLENT CUTTING QUALITY**
- **EXCEPTIONAL ERGONOMICS**



HistoDream AM
Automated Microtome



HistoDream M
Semi-Automated Microtome



EasyCUT
Static Charge Remover for Microtomes

SAVE TIME AND ENHANCE TRACEABILITY WITH **AUTOMATIC TRACKING**



Manual scanning is a laborious, time-consuming, and error-prone task, requiring operators to manually scan specimens throughout the histological steps. Milestone's tracker line provides complete automation and traceability throughout the process, enabling error-free operations.



- **SIMPLE AND AUTOMATIC**
- **FAST TRACKING**
- **ACCURATE DOCUMENTATION**
- **95% TIME SAVING**



T-Tracker

Automatic Basket Scanner



R-Tracker

Automatic Rack Scanner



V-Tracker

Automatic Vial Scanner

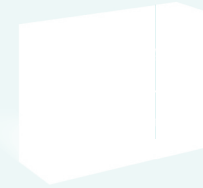
SECURE SPECIMEN TRACKING AND TRACEABILITY FROM OR TO AP



Milestone's MileWATCH software ensures full specimen traceability and complete chain of custody from collection to cutting. MileWATCH connects all Milestone units throughout the entire specimen journey, enabling data recording and identification of critical steps.

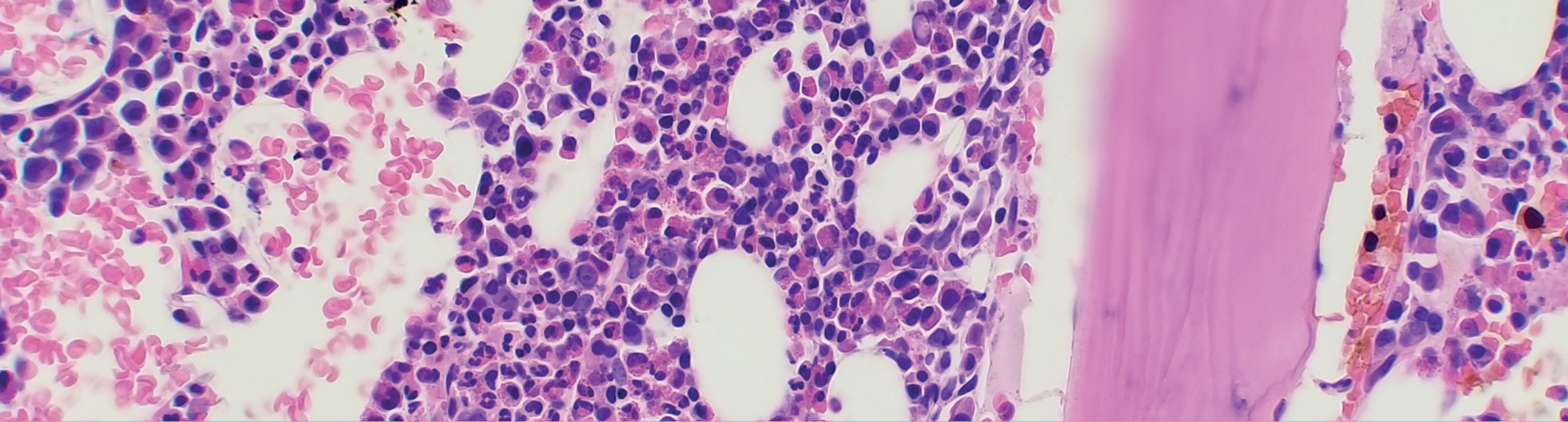


- **COMPREHENSIVE SPECIMEN TRACKING**
- **CRITICAL STEP IDENTIFICATION**
- **AUTOMATION FOR EFFICIENCY**
- **ENHANCED DOCUMENTATION**



MileWATCH
24/7 Monitoring
and Tracking System





ADVANCED SOLUTIONS FOR **FIXATION** AND **DECALCIFICATION**

Fixation and decalcification are vital steps in histopathology specimen processing. Milestone's solutions automate and document the control of key factors like agitation, time, temperature, reagent concentration, and volume for proper decalcification and fixation.



BoneSTATION

Advanced System for Fixation
and Decalcification of Bone Tissues



KOS

Multifunctional Tissue Processor
for Fixation and Decalcification



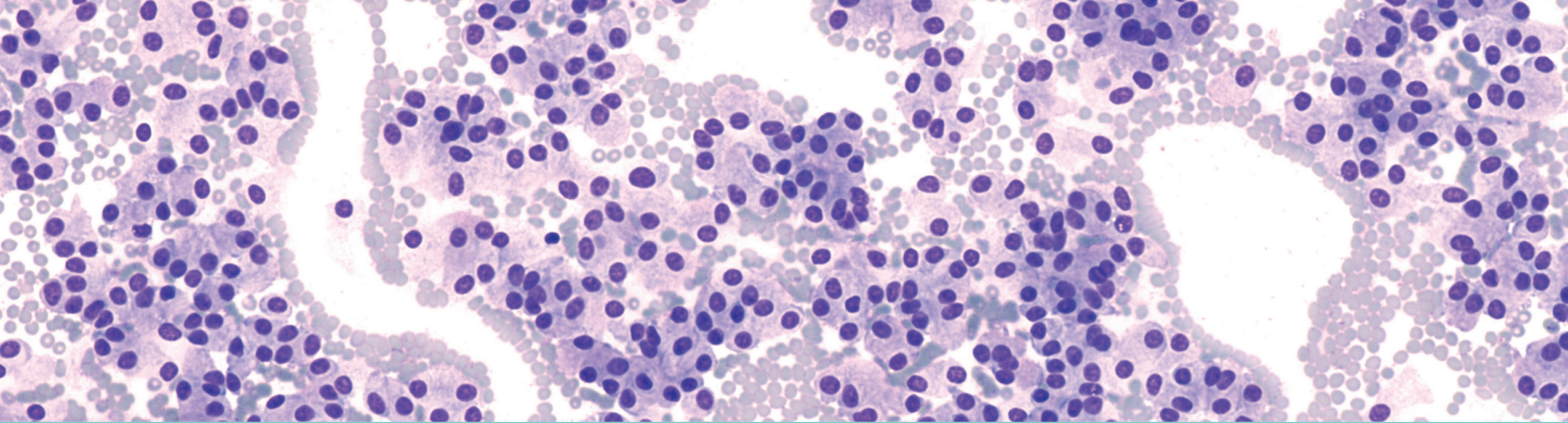
DecalMATE

Automatic Fixation
and Decalcification System



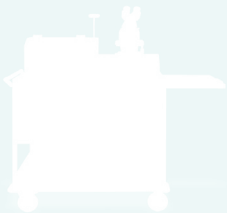
FixSTATION

Automatic System for Standardized
and Optimized Tissue Fixation



SIMPLIFY YOUR FNA PROCEDURES

ROSE protocols for FNA biopsy necessitate the prompt collection and delivery of high-quality images, given the time-limited nature of the procedure and patient sedation. Milestone's RoseSTATION is a comprehensive mobile unit which effectively addresses the challenges of the ROSE process.



RoseSTATION

Mobile Workstation for on-site
evaluation of FNA Cytology



HISTOLOGY GOES GREEN

Milestone product lines offer a greener approach to histological specimen preparation, utilizing reagents and procedures that eliminate operator exposure to toxic substances like xylene and formaldehyde. This commitment ensures a safer and more environmentally friendly laboratory.

FIXATION

FineFIX, FormSAFE

PROCESSING

MileONE & MileTWO, JFC Solution, MileGREEN

FROZEN SECTIONS

MCC

DECALCIFICATION

MoL-DECALCIFER



HIGH PERFORMANCE WITH QUALITY CONSUMABLES

Milestone offers a comprehensive range of consumables specifically designed to complement and optimize the performance of our cutting-edge instruments. These consumables are meticulously crafted to meet the highest quality standards, ensuring seamless integration and reliability in laboratory workflows.

TRANSPORTATION AND STORAGE

Vacuum Bags, Buckets, FormSAFE

AUTOEMBEDDING

Synergy kit

MICROTOMY

DreamBLADES

MILESTONE: YOUR TRUSTED PARTNER

Choosing the right instrument for your laboratory goes hand in hand with selecting the right partner. At Milestone, we prioritize providing our users with a superior overall experience that encompasses our professionalism, expertise, products, and technology. Our dedicated corporate and local teams are extensively trained in applications and service, ensuring fast and reliable support. We are committed to assisting you throughout the entire process, offering tailored solutions, developing specialized applications, and exceeding your expectations.



MILESTONE Srl
Via Fatebenefratelli, 1/5 - 24010 Sorisole (BG) - Italy
Tel: +39 035 4128264
www.milestonemed.com - email: medical@milestonemed.com

MILESTONE MEDICAL TECHNOLOGIES, INC.
6475 Technology Avenue, Suite F, Kalamazoo, MI 49009 - USA
Tel: 269-488-4950 - Toll-free: 866-995-5300 -
www.milestonemed.com - email: info@milestonemed.com